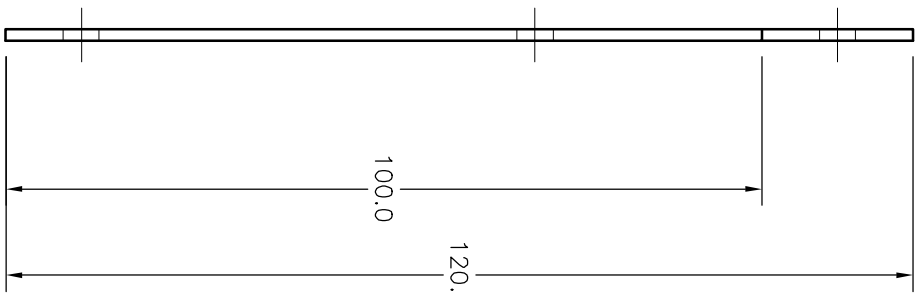
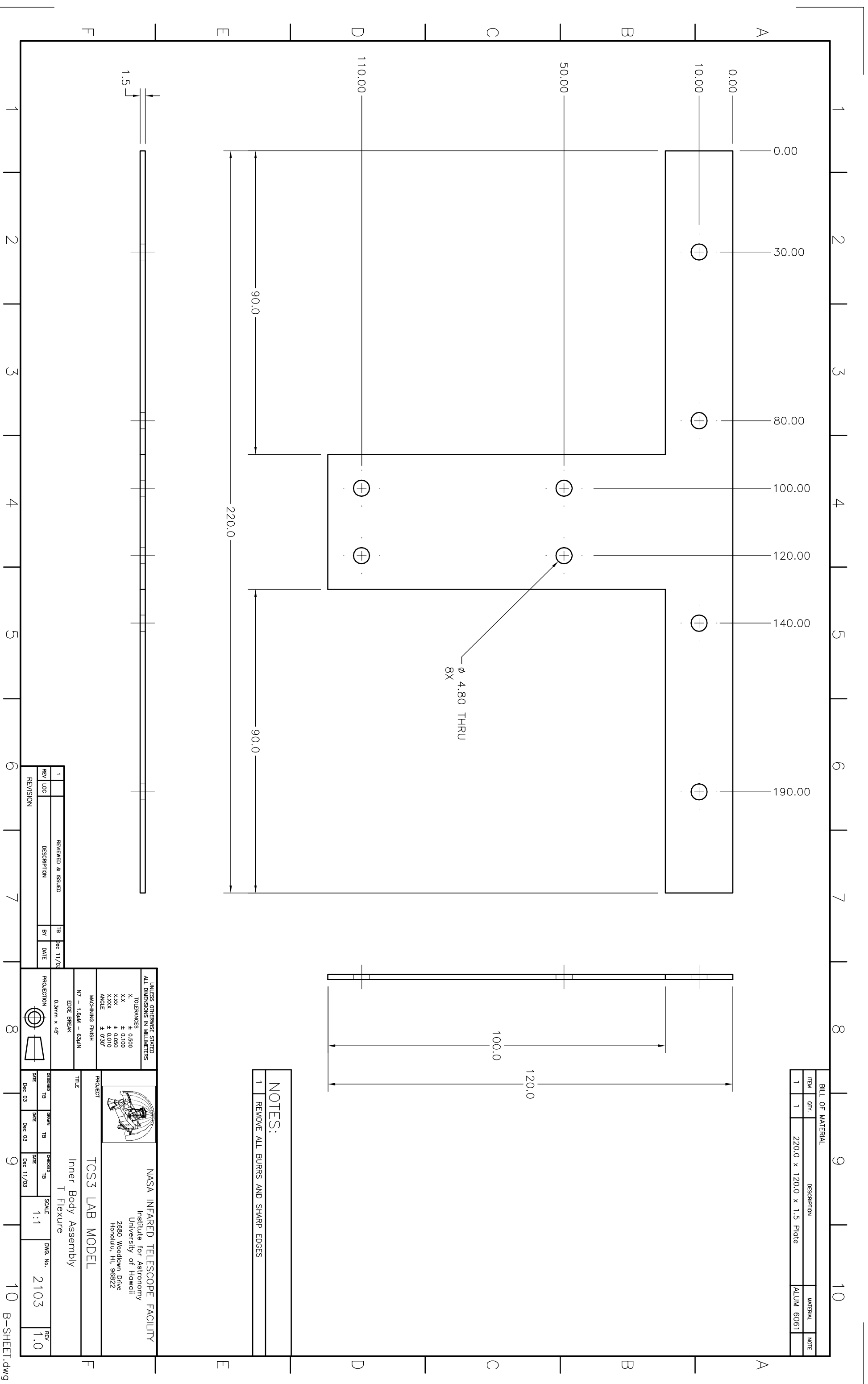


ITEM	QTY.	DESCRIPTION	MATERIAL	NOTE
1	1	220.0 x 120.0 x 1.5 Plate	ALUM 6061	



NOTES:
 1 REMOVE ALL BURRS AND SHARP EDGES



UNLESS OTHERWISE STATED
 ALL DIMENSIONS IN MILLIMETERS

TOLERANCES
 X ± 0.500
 X.X ± 0.100
 X.XX ± 0.050
 X.XXX ± 0.010
 ANGLE ± 0.50°

MACHINING FINISH
 N7 - 1.6µm - 63µm
 EDGE BREAK
 0.3mm x 45°

PROJECT
 TCS3 LAB MODEL
 Inner Body Assembly
 T Flexure

NASA INFRARED TELESCOPE FACILITY
 Institute for Astronomy
 University of Hawaii
 2680 Woodlawn Drive
 Honolulu, HI, 96822

REV	LOC	DESCRIPTION	BY	DATE
1		REVIEWED & ISSUED	TB	Dec 11/03

DESIGNED TB	DRAWN TB	CHECKED TB	SCALE	DWG. No.	REV
Dec 03	Dec 03	Dec 11/03	1:1	2103	1.0